

Asesoría Pericial La Plata
Sección Anatomía Patológica

Patología Perinatal

Dra. Irene de Amézola

2010





Feto y lesiones en superficie cutánea



Feto y block visceral tóraco-abdominal



Momificación



Feto y cordón umbilical



Feto momificado







Maceración

















Feto unido a placenta mediante cordón umbilical



Lesión vital miembro superior derecho







Embarazo gemelar

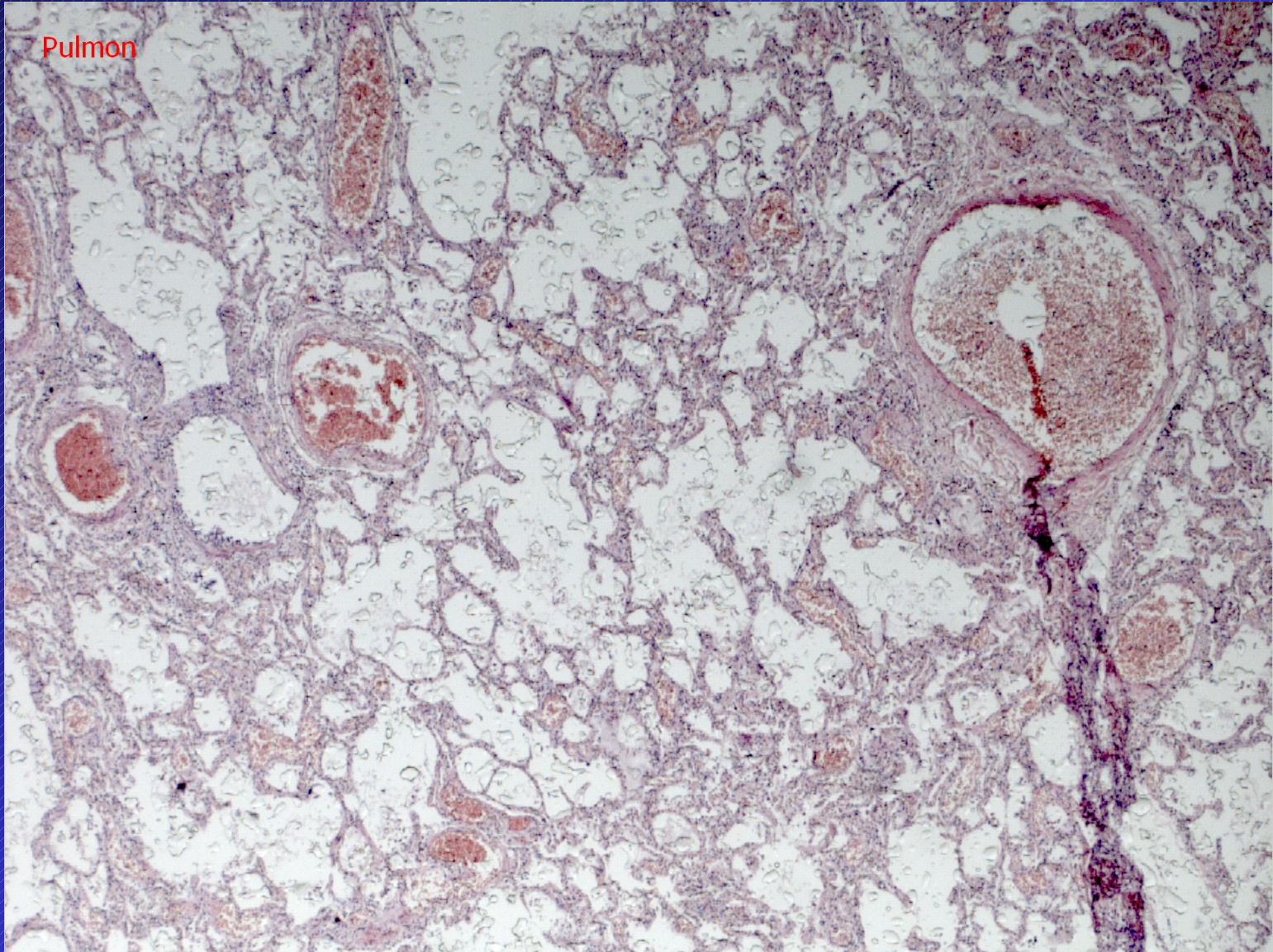


Feto, placenta y cordón umbilical

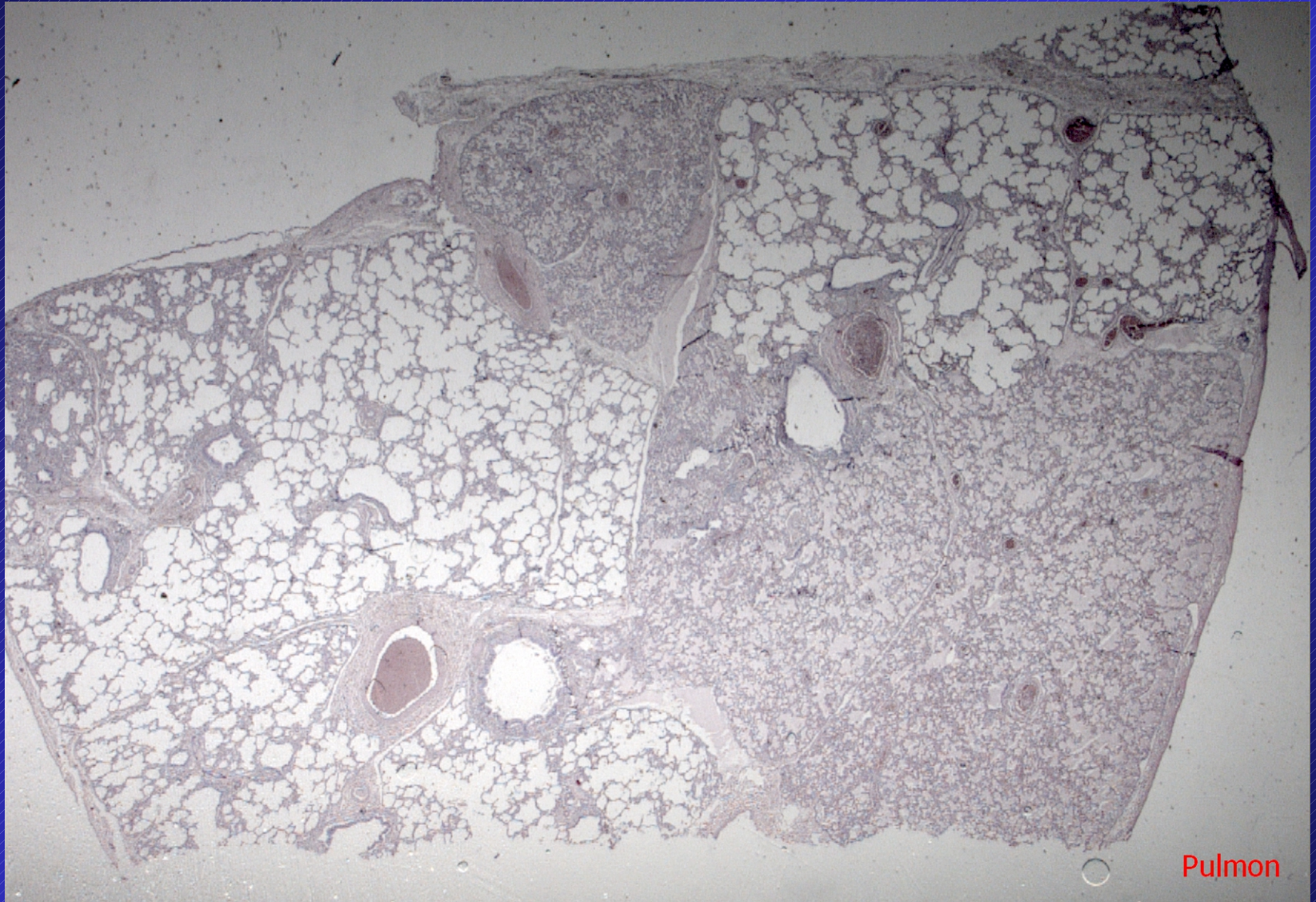


Block tóraco-abdominal

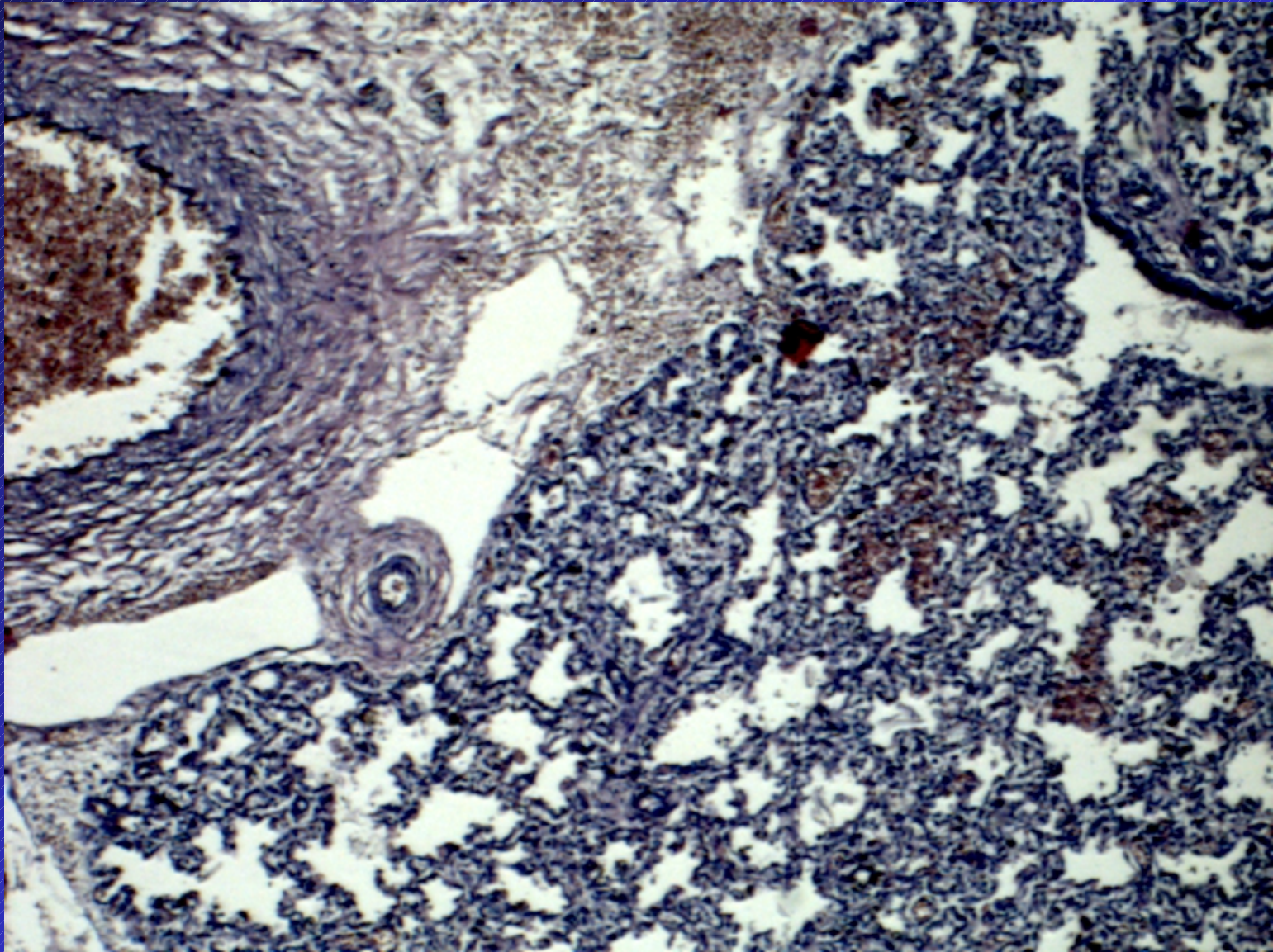
Pulmon



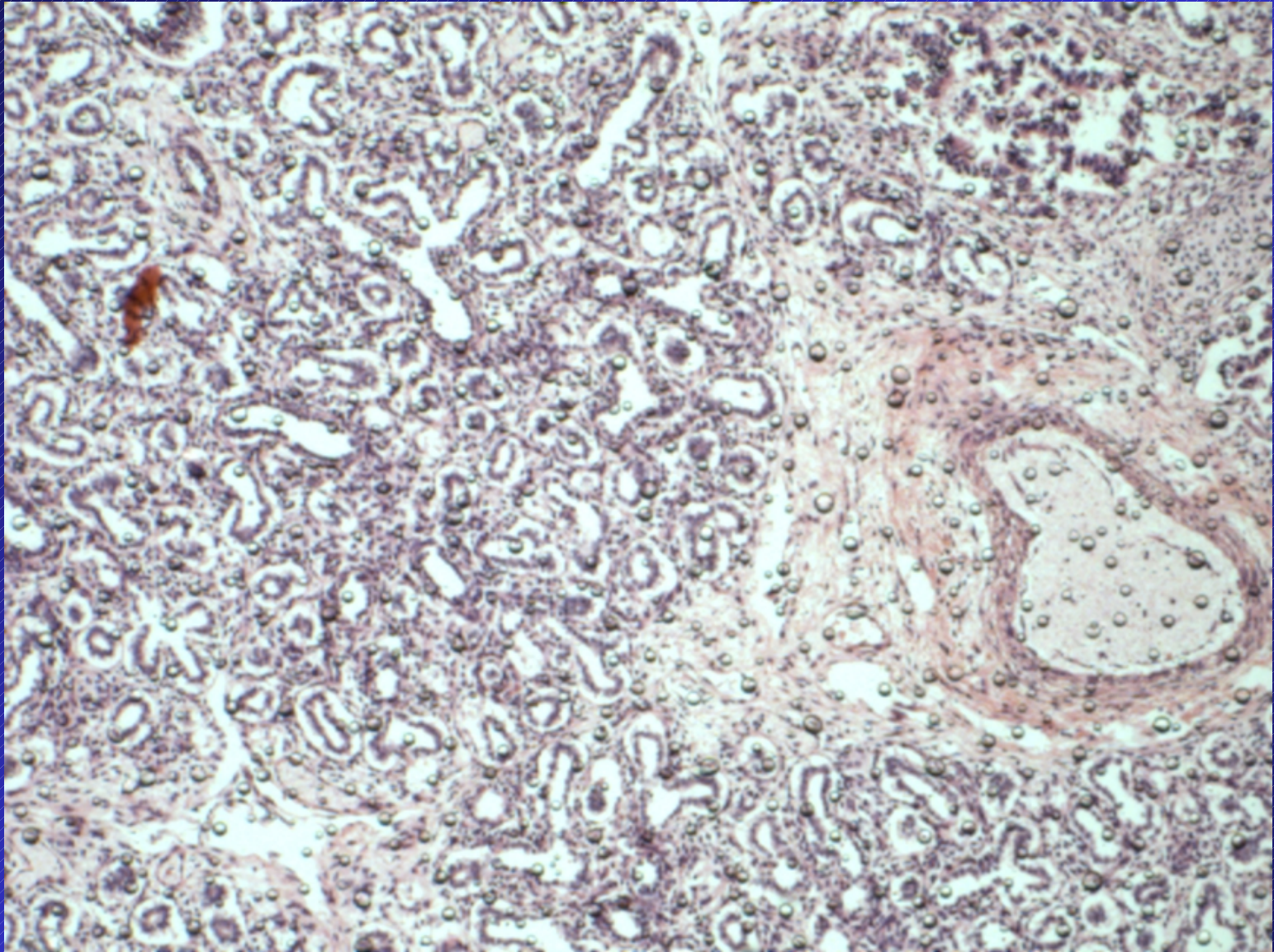
Pulmón maduro expandido



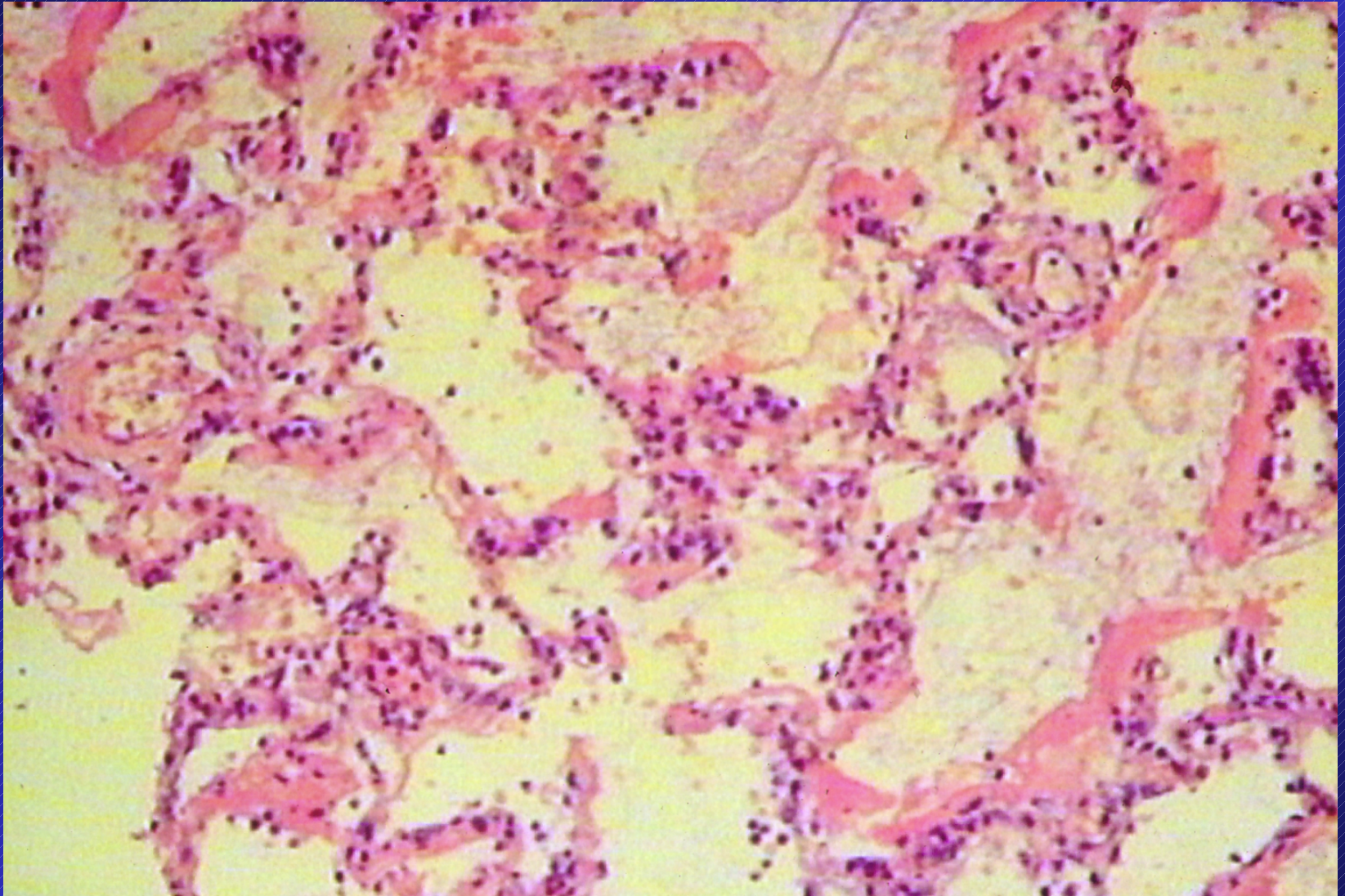
Pulmón maduro parcialmente expandido



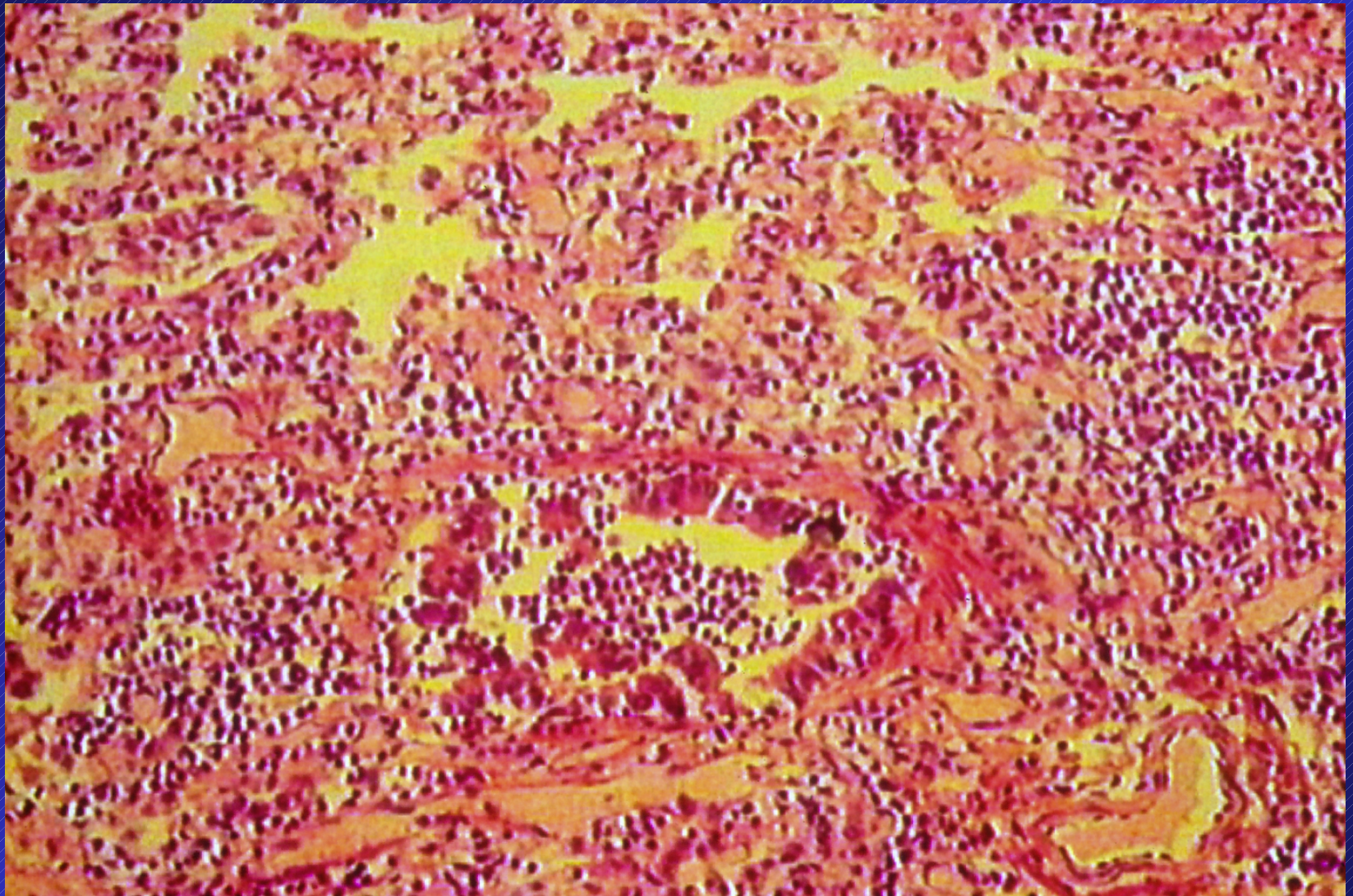
Pulmón fetal maduro parcialmente expandido



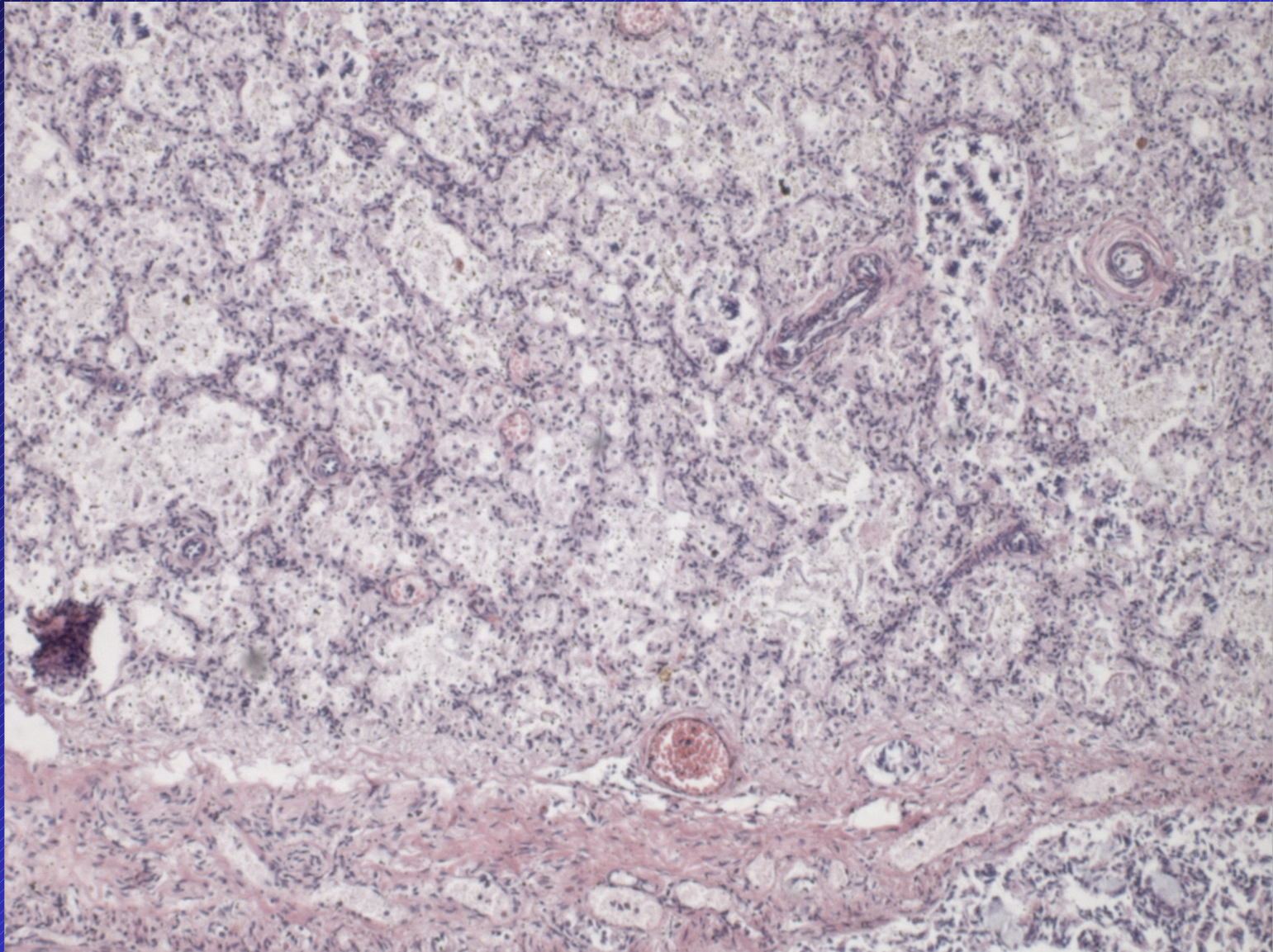
Pulmón fetal inmaduro



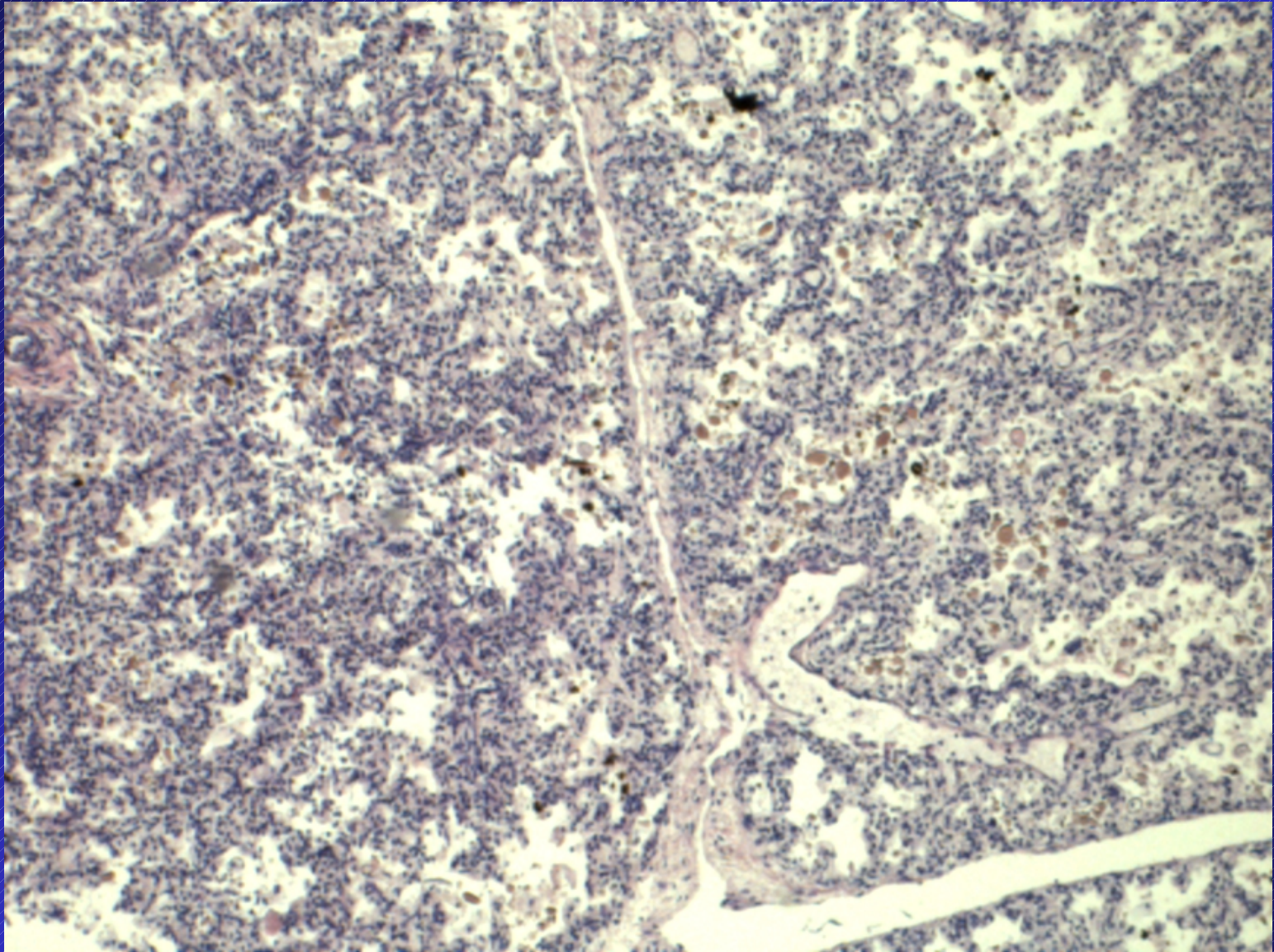
Enfermedad de membranas hialinas



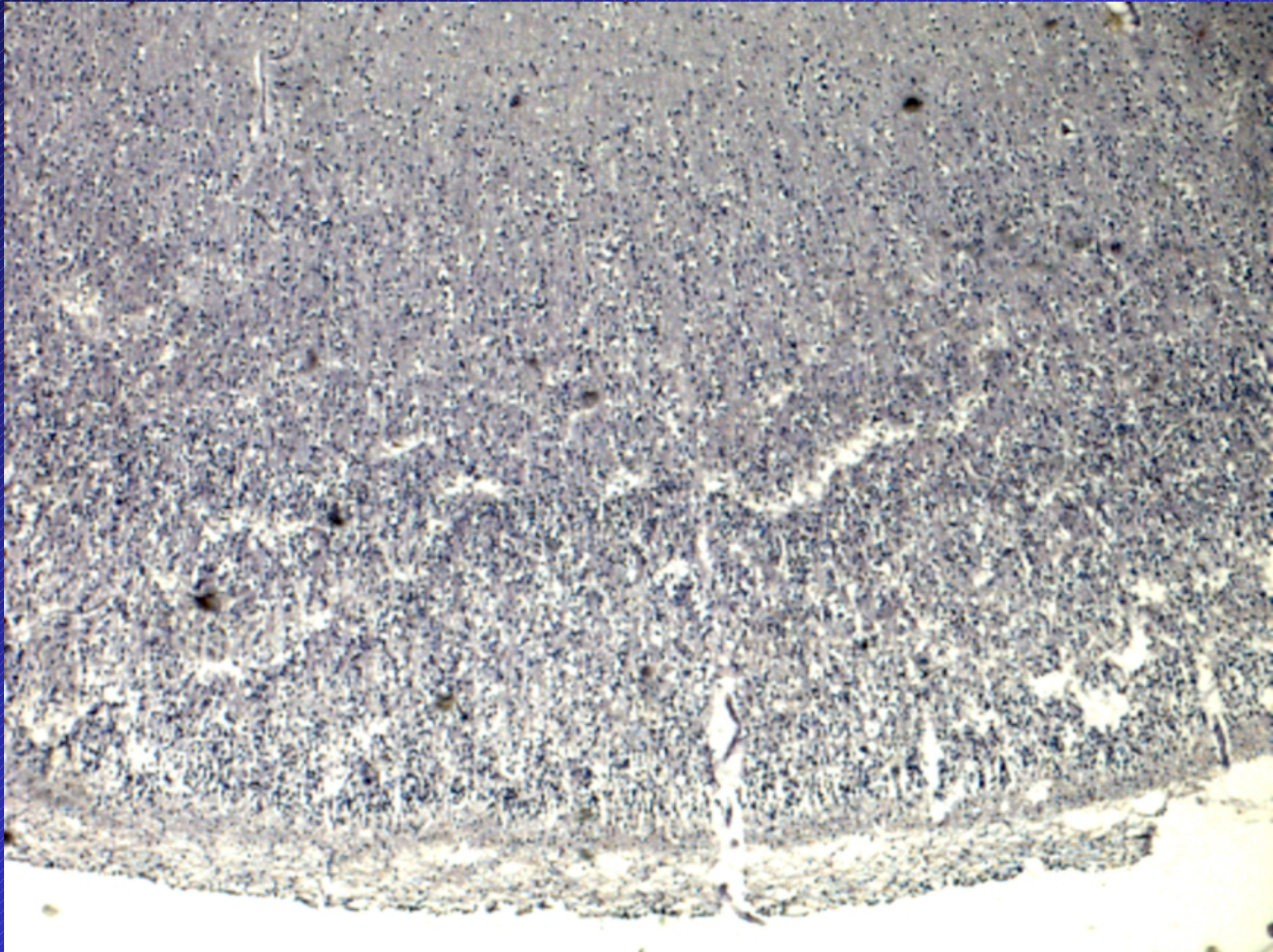
Neumonía perinatal



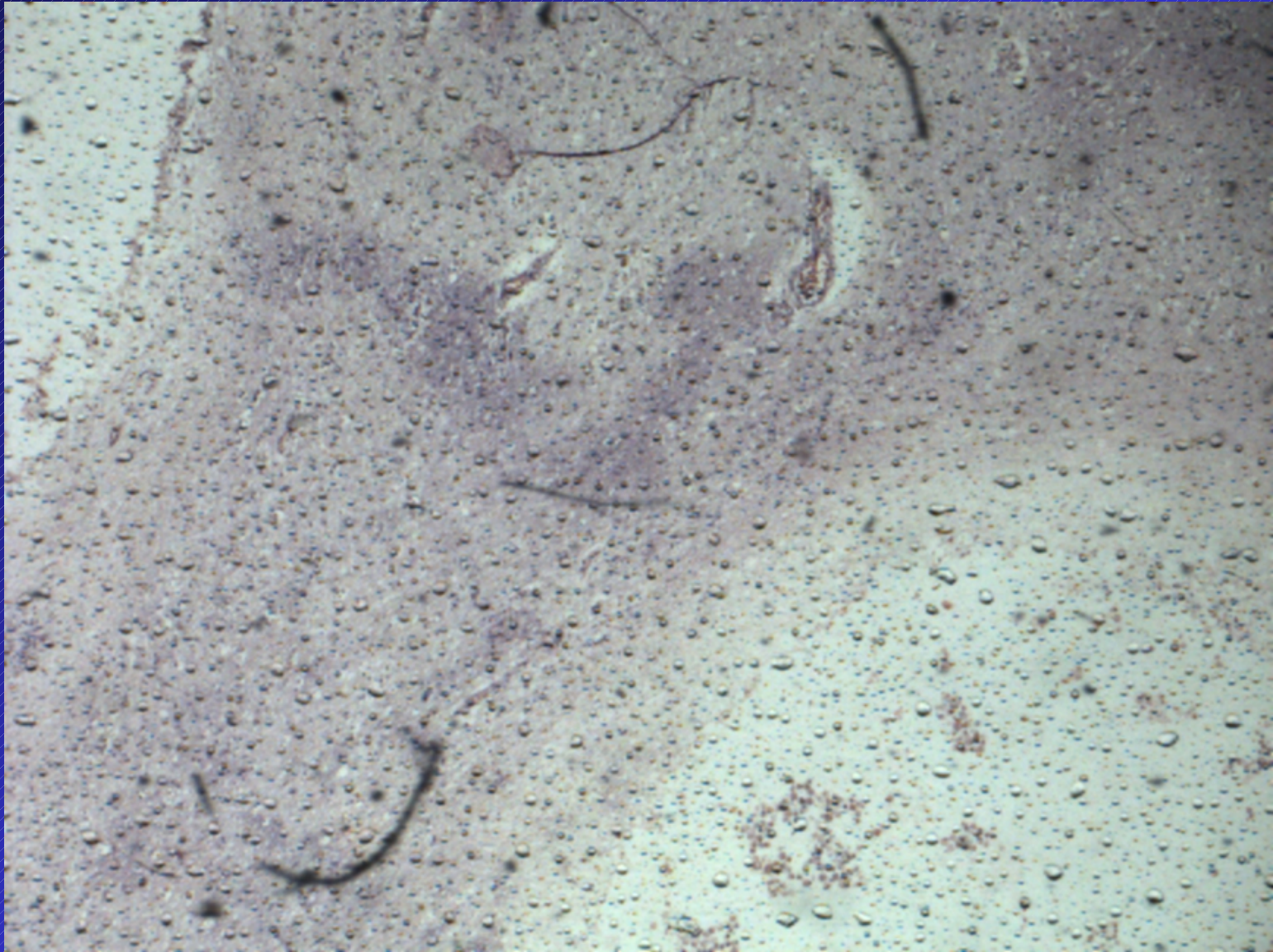
Broncoaspiración de líquido amniótico (BALA)



BALAM



Cerebro fetal, migración neuronal



Hipoxia fetal crónica, encefalopatía multiquística



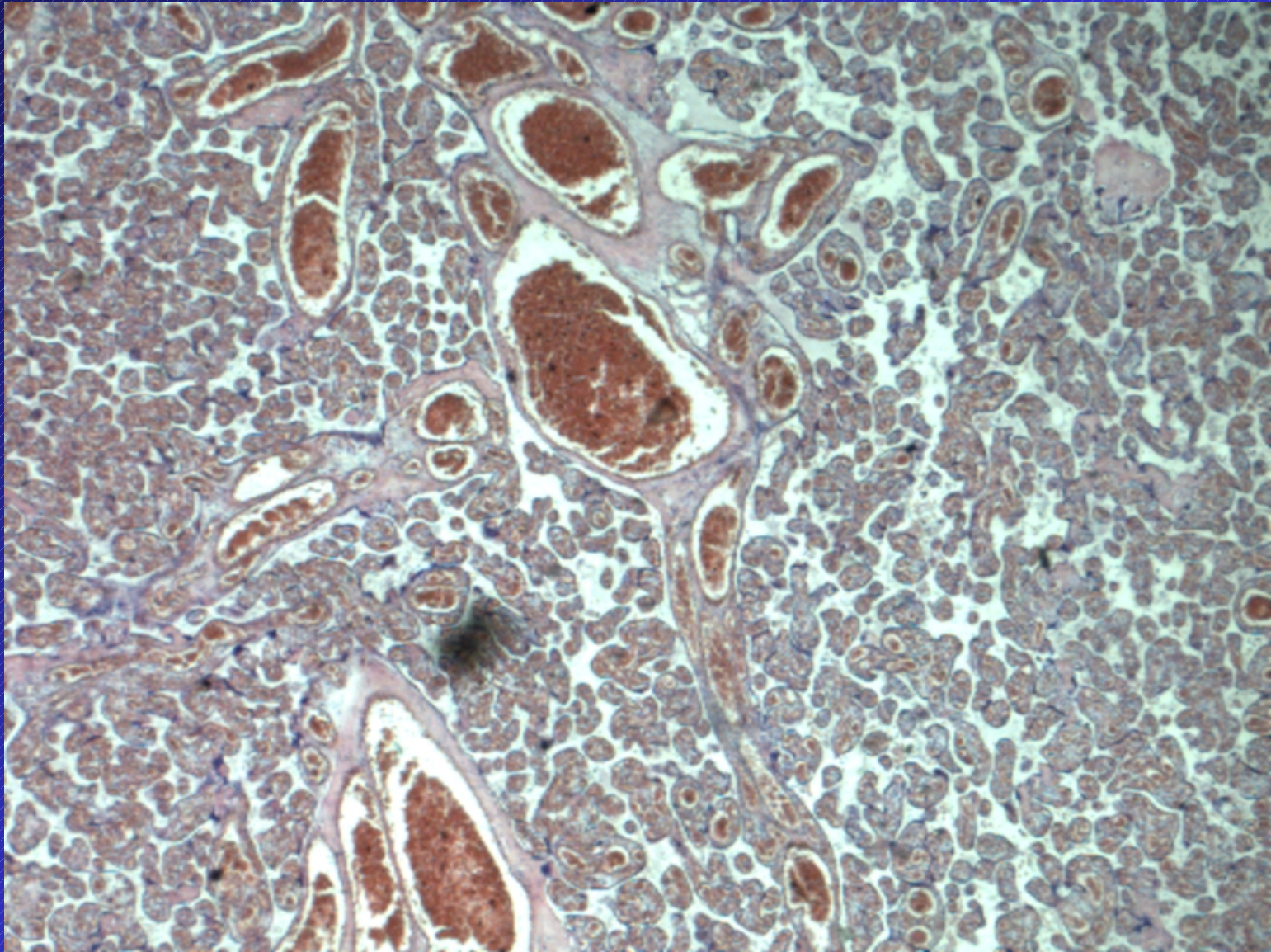
Placenta y cordón umbilical



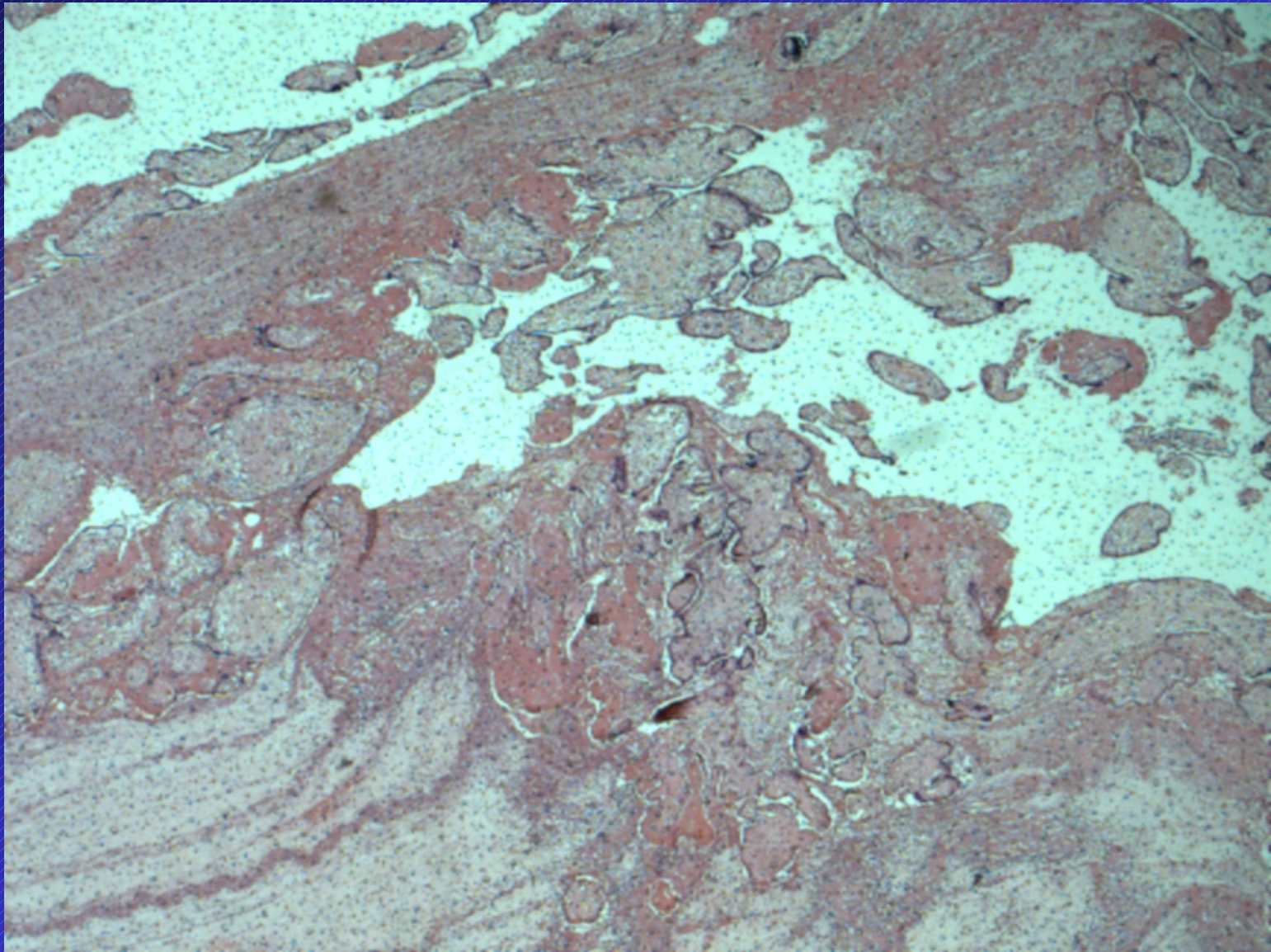
Hematoma retroplacentario y cordón umbilical



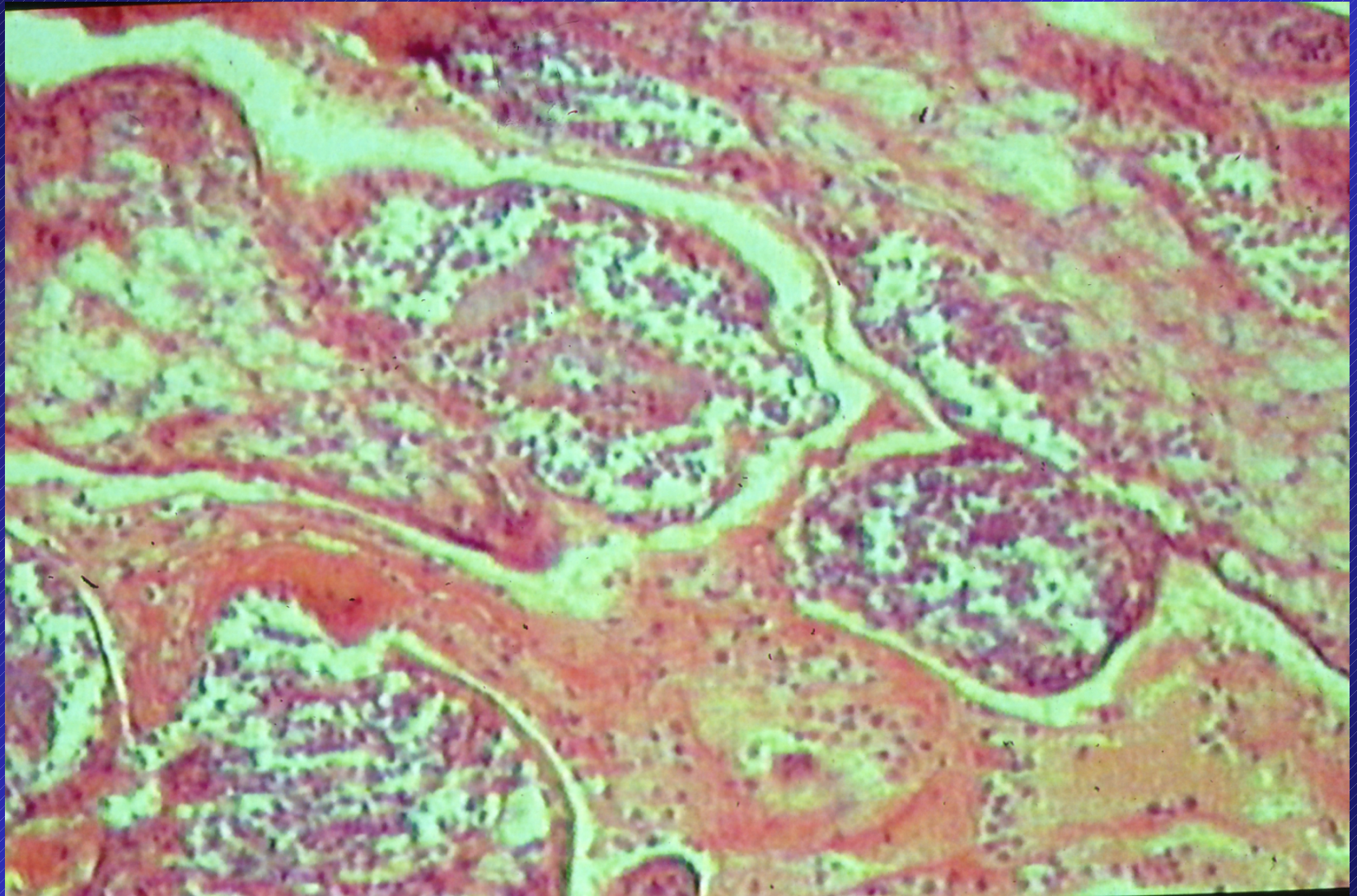
Útero y placenta inserta



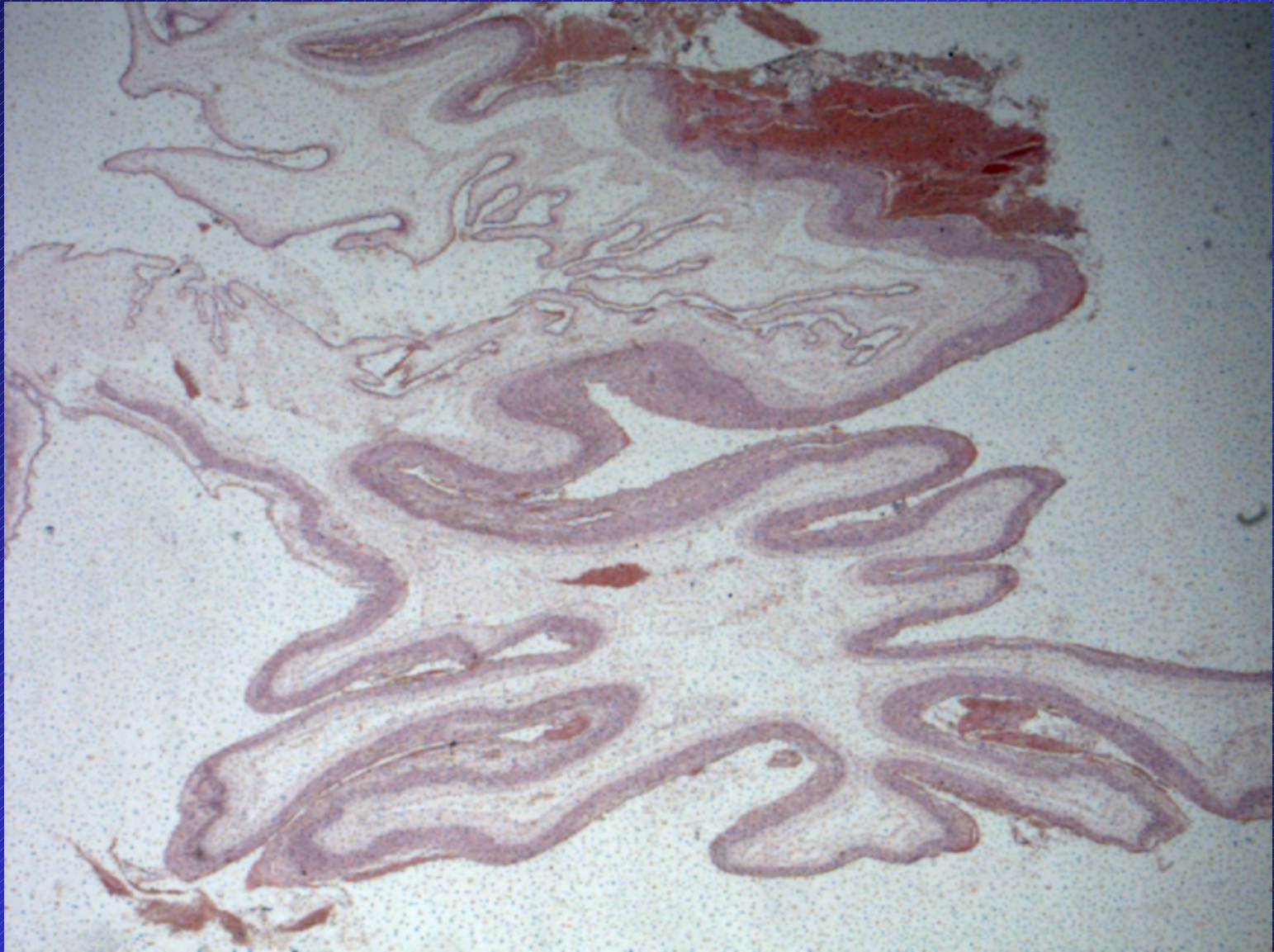
Placenta normal del tercer trimestre



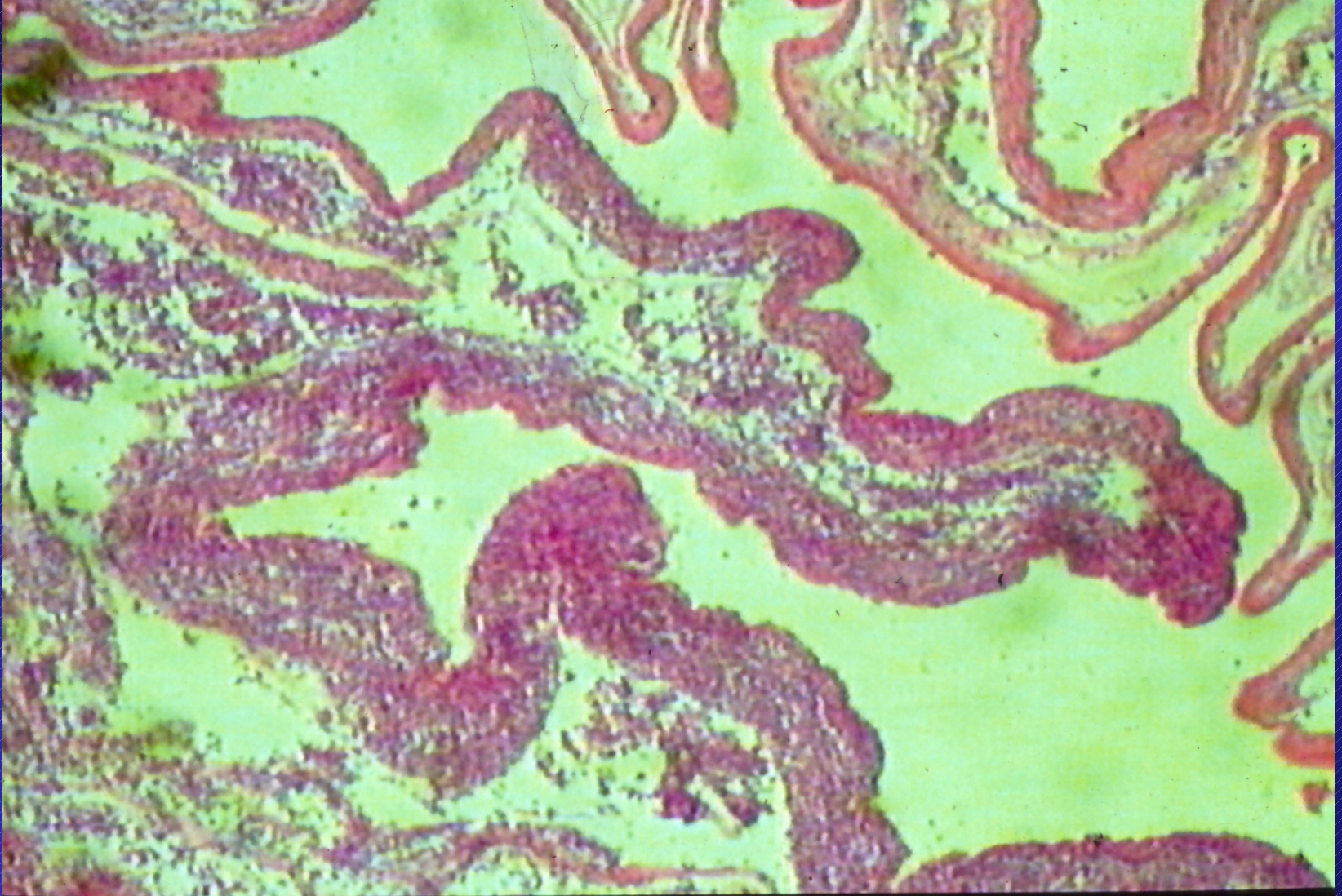
Infarto placentario



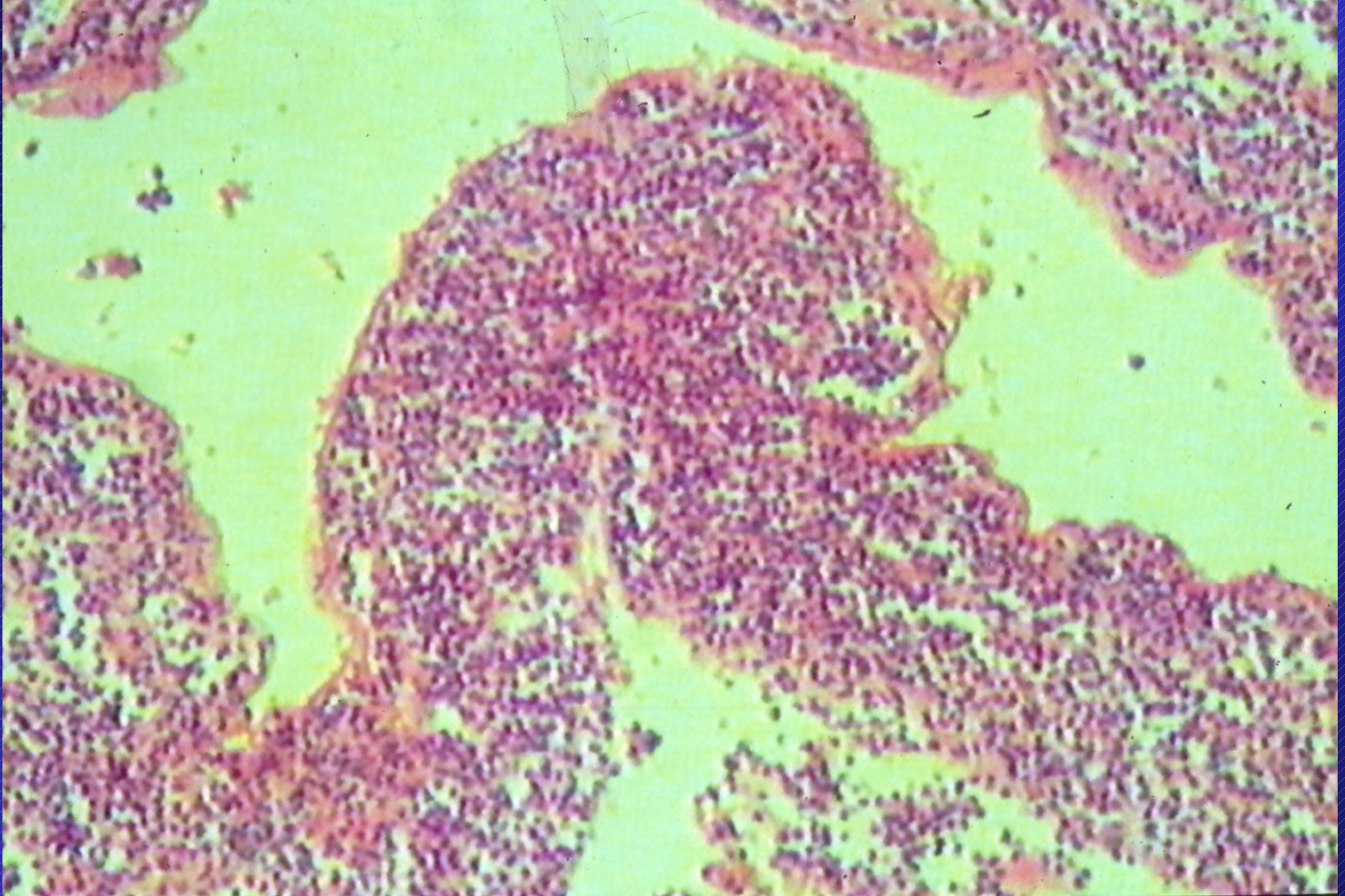
Villitis aguda



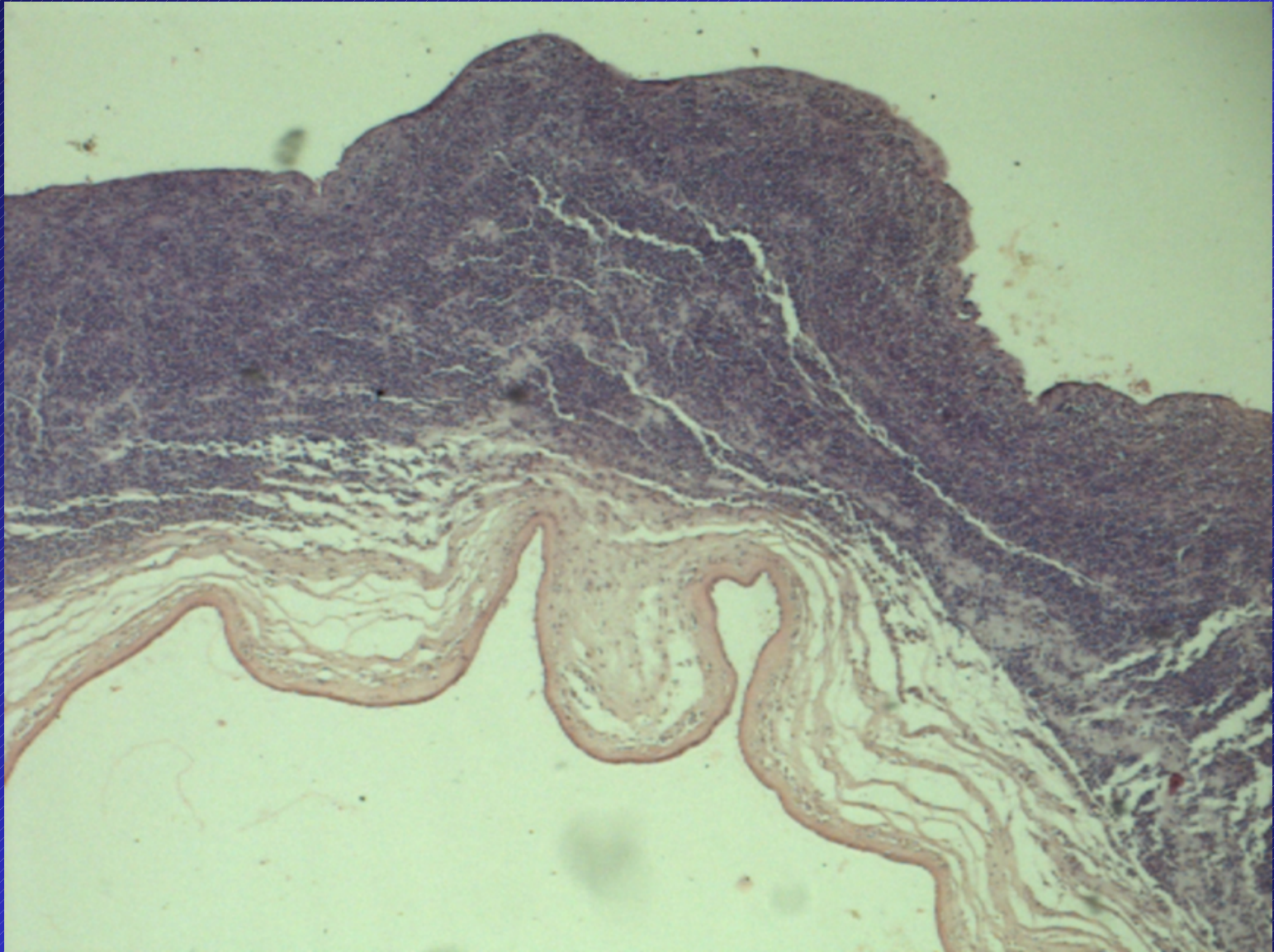
Membranas ovulares normales



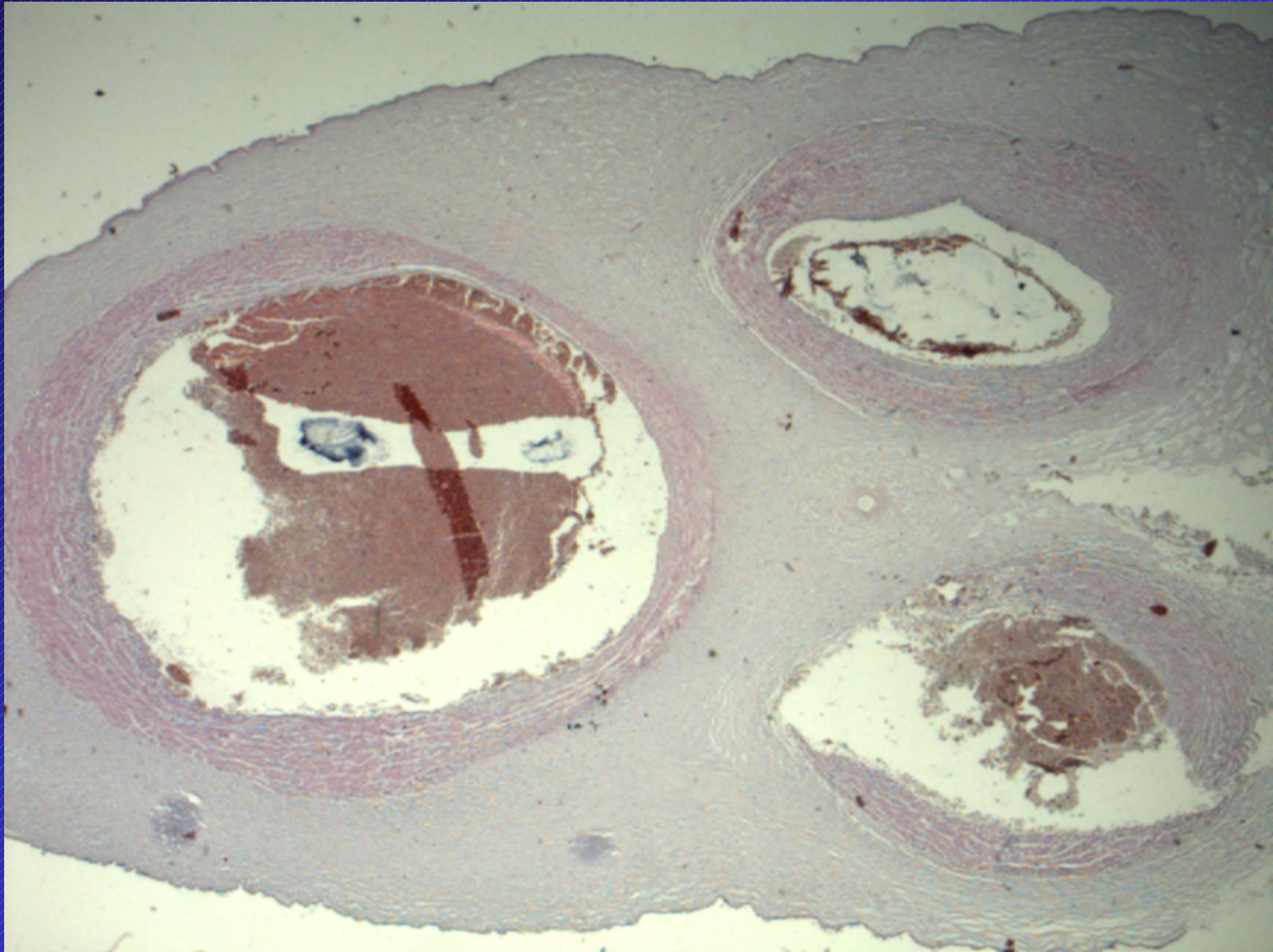
Corioamnionitis aguda



Corioamnionitis aguda tercer estadio



Corioamnionitis aguda



Cordón umbilical, nudo real

Gracias por su atención